

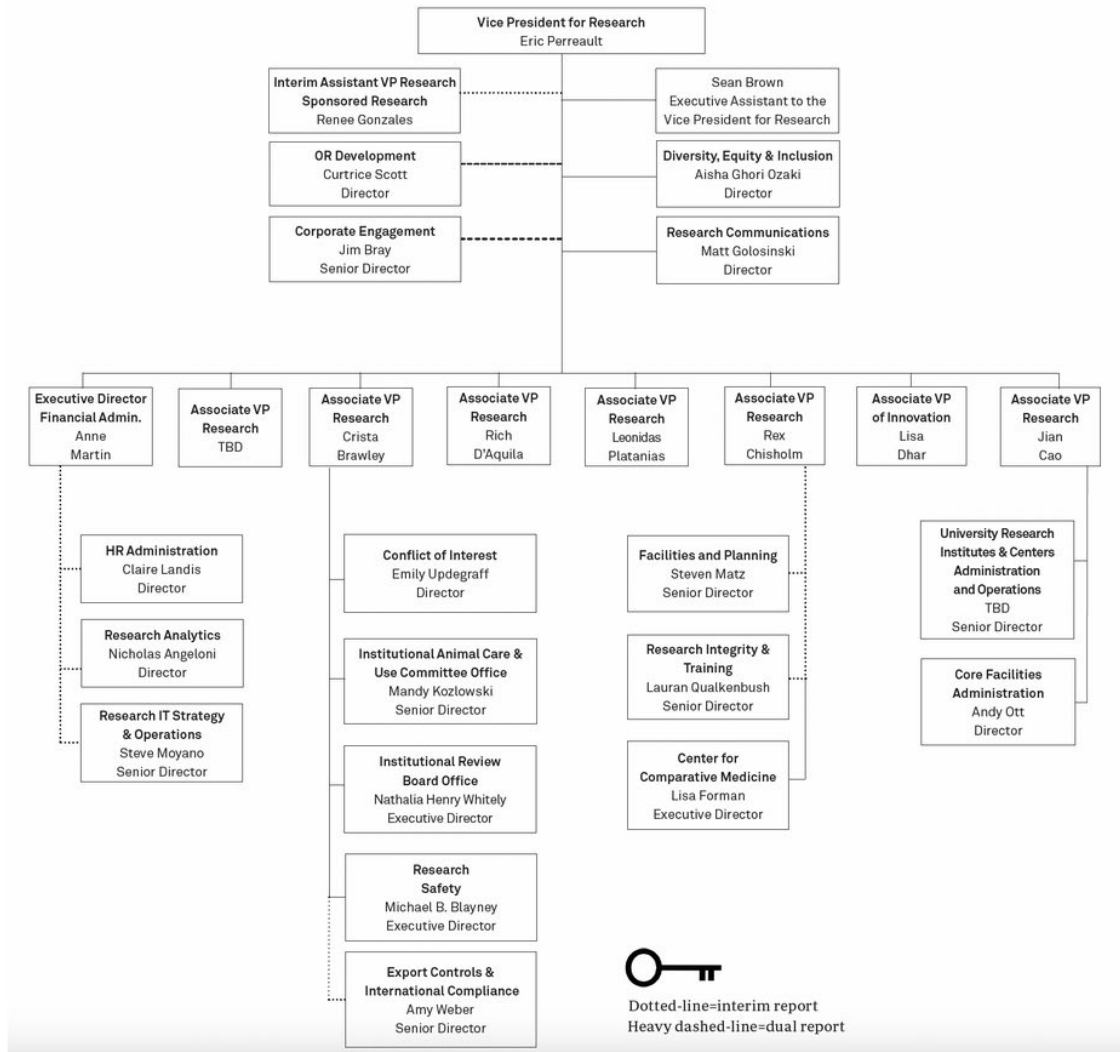
# Core Facilities Brown Bag

November 6, 2023

# Agenda

- ❑ Updates on OR Org Structure
- ❑ Usage Trends
- ❑ Professional Development
- ❑ UBI Update
  - Timeline
  - Fully costed rate update
- ❑ Internal grants Update
- ❑ NUcore Updates
  - New Features
- ❑ User Survey Trends

# Office for Research Org Chart

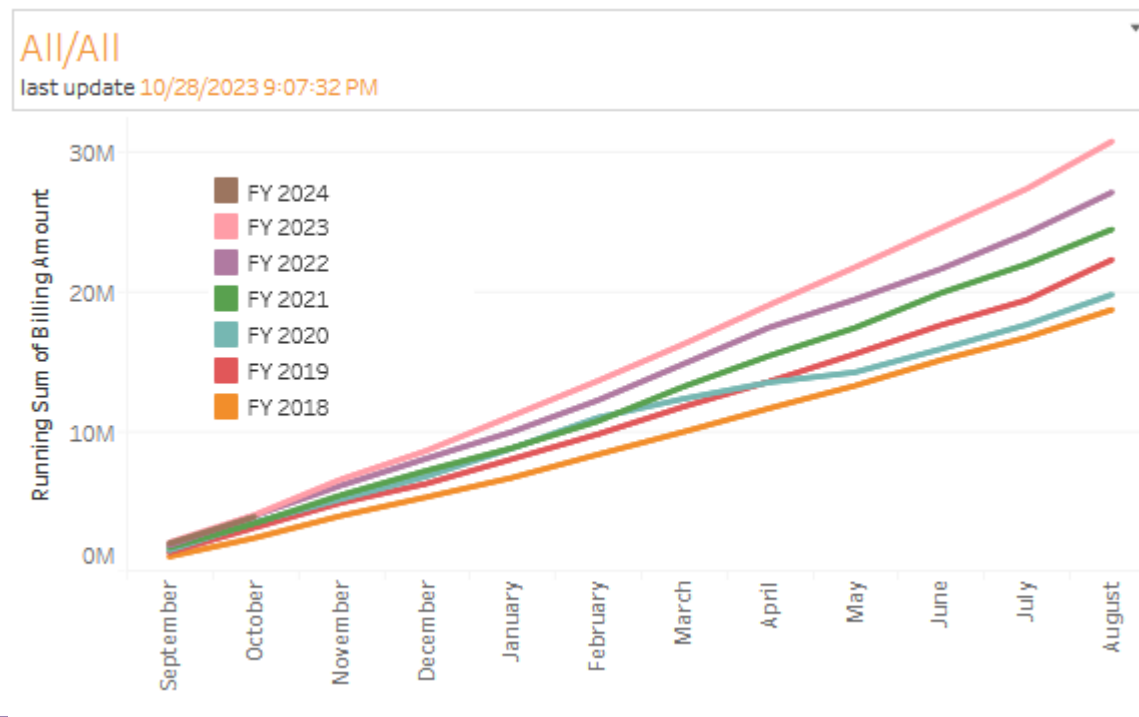


Posted at: <https://research.northwestern.edu/about/leadership/or-organization-chart.html>

# NUcore Usage Trends

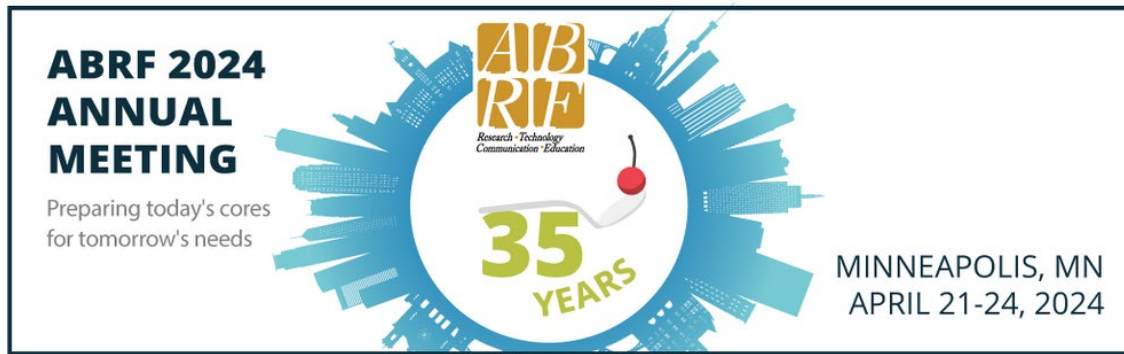
All / All

	FY 2018	FY 2019	FY 2020	FY 2021	FY 2022	FY 2023	FY 2024
Billing Amount	\$18,666,180	\$22,238,902	\$19,746,359	\$24,408,598	\$27,051,625	\$30,693,765	\$3,866,203
Unique Departments	221	237	208	225	239	227	174
Unique PI's	1,491	1,677	1,613	1,695	1,804	1,845	845
Unique Users	3,986	4,355	4,051	4,136	4,537	4,650	2,294
Unique Funded Projects	1,722	1,728	1,645	1,730	1,751	1,778	933
Hours Use	124,297	153,230	111,273	135,166	145,544	160,862	26,037



# Professional Development

- ❑ ABRF Scope increasing beyond typical Biomolecular Facilities
- ❑ High Emphasis on Core Management



- ❑ Advocate for career pathways, core acknowledgement, data management, and rigor and reproducibility
- ❑ FSM/OR will be purchasing Institutional Memberships for ABRF
  - More to come

# UBI Update – Timeline

- ❑ NUcore and NUFinancials should be reconciled by 11/30/2023
- ❑ FY23 UBI information will be distributed to all Cores by mid of December
- ❑ All Cores should return completed UBI report by mid of January
- ❑ CFA will be turning data over to Tax and Regulatory Services by end of January

# Internal Grants Update

- ❑ Fall 2023 Decisions will be released before Thanksgiving
- ❑ “Spring” Competition announcement to come out shortly
  - Assume Jan 15 due date
  - March 1 decisions released
  - Plan now
  - Contact Andy if you have not submitted recently
- ❑ ReLODE proposals will be accepted

# NUcore Updates

Northwestern University - Recharge Worksheet (Version 2013-July) Applicable

**Summary**

Name of Recharge/Service Center: Flow Cytometry Core Facility

NUFinancials Chartstring:

Facility Location: Olson 8th Floor

[Add Pricing Rules](#)

Pricing rules determine the specific rate applied to each price group.

**Current Pricing Rules**

Effective: September 1, 2023, Expires: August 31, 2024

Allocation to Services

Service 1: Cell Sorting

Charges for reservation

Note:

Price Group (Type)	Rate Per Hour	Minimum Cost	Reservation Cost
CBC Open Access (Internal)	\$1,000.00	\$500.00	\$500.00
External Rate (External)	\$1,000.00	\$500.00	\$500.00
External Academic Rate (External)	\$1,000.00	\$500.00	\$500.00
Fully Costed Rate (External)	\$1,000.00	\$500.00	\$500.00
Northwestern Base Rate (Internal)	\$1,000.00	\$500.00	\$500.00
Cancer Center Rate (Internal)	\$1,000.00	\$500.00	\$500.00

figures should form a basis for next year's Projections

**Total Current FY Utilization**  
hours, units, product measures

**Projected Utilization for Next FY**  
NU General Users (Non-Cancer Center)  
Cancer Center Users  
External Academic Users  
External Commercial Users

**Total Projected Utilization for Next FY**  
hours, units, product measures

**Rates**

Calculated NU General User Rate DM

Calculated Cancer Center

Calculated Unsubsidized Rate

Fully Costed Rate (to be entered in NUcore)

Established Billing Rates for Next FY

(2) NU User Rate

(2) Cancer Center User Rate

(3) External Academic User Rate

(3) External Commercial User Rate

- ❑ Dana to provide updated cost study after meeting
  - Will be sent to Ops Dir and Admin staff listed in AP6 Personnel Smartsheet (Annual Report)



# NUcore Updates

# Survey Trends

Question Code	Year								
	2015	2016	2017	2018	2019	2020	2021	2022	2023
Instruments - easy scheduling	4.33	4.34	4.30	4.29	4.35	4.31	4.36	4.40	
Instruments - operating condition	4.28	4.32	4.33	4.29	4.36	4.34	4.39	4.45	4.47
Instruments - training availability	4.37	4.39	4.38	4.37	4.44	4.41	4.39	4.47	4.57
Services - easy request	4.29	4.31	4.28	4.29	4.31	4.36	4.36	4.41	4.48
Services - quality	4.33	4.35	4.34	4.34	4.34	4.38	4.41	4.46	4.52
Services - timely fashion	4.25	4.24	4.23	4.24	4.22	4.27	4.29	4.33	4.38
Staff - accessibility	4.43	4.44	4.42	4.42	4.44	4.45	4.46	4.51	4.48
Staff - experiment design	4.40	4.42	4.42	4.42	4.45	4.46	4.49	4.54	4.53
Staff - technical support	4.43	4.45	4.45	4.44	4.44	4.46	4.49	4.53	4.52
Grand Total	4.35	4.37	4.36	4.35	4.38	4.39	4.41	4.46	4.50

**Table 1:** Average score of survey respondents by question and year using 5-point Likert scale (5 most positive). Note that instrument scheduling question was dropped in 2023.

# Survey Trends

Question Code	Likert Score	Year								
		2015	2016	2017	2018	2019	2020	2021	2022	2023
Instruments - operating condition	1	1.7%	1.8%	1.2%	2.3%	2.0%	2.5%	2.9%	2.1%	1.9%
	2	2.5%	1.7%	1.2%	2.2%	2.0%	1.7%	1.3%	1.2%	2.3%
	3	9.8%	7.4%	9.1%	10.0%	7.7%	8.3%	6.5%	7.0%	4.9%
	4	37.5%	40.7%	40.2%	35.5%	34.6%	34.1%	32.5%	29.6%	29.0%
	5	48.5%	48.4%	48.4%	50.0%	53.7%	53.4%	56.8%	60.2%	61.9%
	Total	100.0%	100.0%	100.0%	100.0%	100.0%	100.0%	100.0%	100.0%	100.0%
Services - quality	1	1.9%	1.3%	1.5%	2.3%	2.4%	2.1%	2.5%	1.8%	1.7%
	2	1.9%	1.8%	2.1%	2.3%	1.9%	1.9%	1.6%	1.7%	2.3%
	3	10.1%	8.6%	8.3%	8.5%	9.5%	8.1%	7.0%	7.4%	4.6%
	4	34.1%	37.1%	37.2%	33.2%	31.9%	31.5%	30.1%	26.3%	25.6%
	5	52.0%	51.3%	51.0%	53.7%	54.3%	56.5%	58.8%	62.8%	65.9%
	Total	100.0%	100.0%	100.0%	100.0%	100.0%	100.0%	100.0%	100.0%	100.0%
Staff - experiment design	1	1.5%	1.5%	1.3%	1.7%	1.8%	1.7%	2.2%	1.5%	1.6%
	2	1.5%	1.5%	1.3%	1.3%	1.7%	1.2%	1.3%	1.3%	1.5%
	3	9.0%	7.7%	8.4%	9.2%	7.8%	7.6%	6.3%	6.5%	7.3%
	4	31.5%	32.1%	31.6%	29.1%	27.7%	28.1%	25.9%	22.6%	21.7%
	5	56.5%	57.2%	57.4%	58.8%	61.1%	61.4%	64.4%	68.0%	67.8%
	Total	100.0%	100.0%	100.0%	100.0%	100.0%	100.0%	100.0%	100.0%	100.0%

**Table 2:** Percentage of responses by question and year and 5-point Likert scale (5 most positive).